

# Connecting Windows 7 to C2k Wireless

## Overview

This information sheet explains the steps required to connect a Windows 7 device to C2k Wireless. This is a first-time only activity and would only need to be carried out again when the user account password has changed.

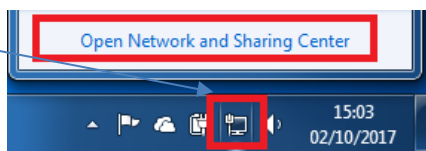
## Prerequisites for connecting to C2k Wireless:

C2k User account must be a member of **Meru C2k Wireless** security group

Alternatively, for shared devices you can use the **shared accounts** located at C2k Exchange | My School | School Documents | Guest Wireless Folder.

From the bottom right corner

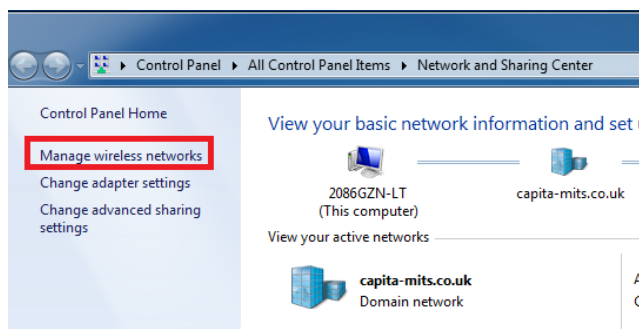
Click the network symbol



Select the Open Network and Sharing Center



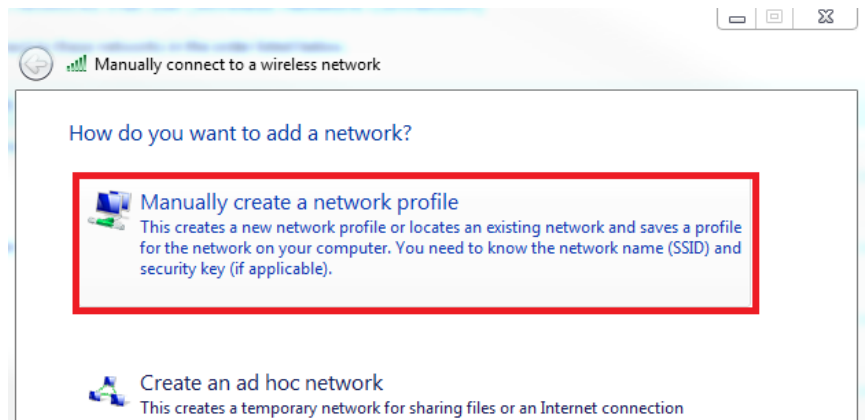
Click the Manage wireless network



Click "Add"



Select! Manually create a network profile



On the next window

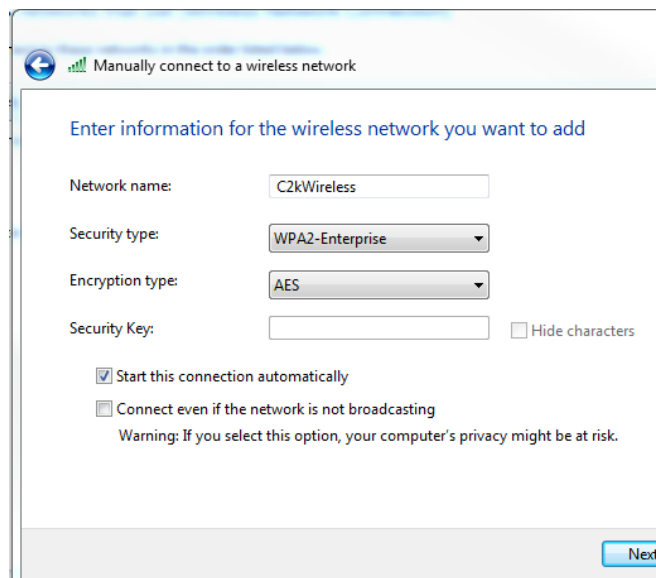
Enter **Network name:** C2kWireless

**This has to be case sensitive**

**Security type:** WPA2-Enterprise

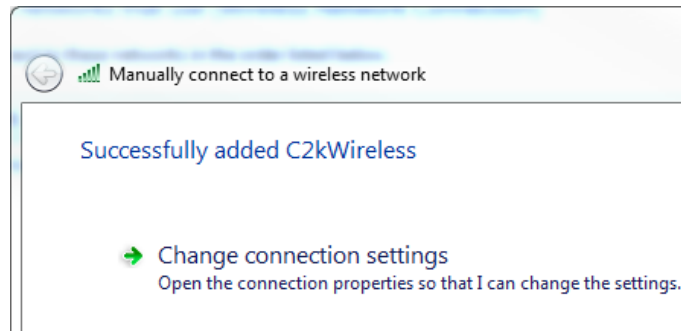
**Encryption type:** AES

Click! Next

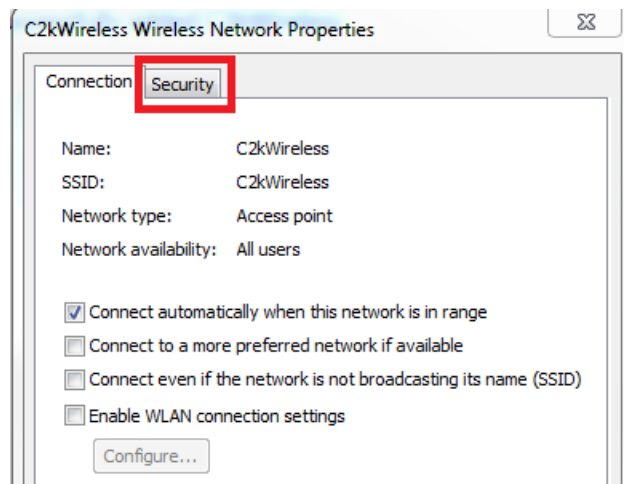


From the next page

Select! Change connection settings

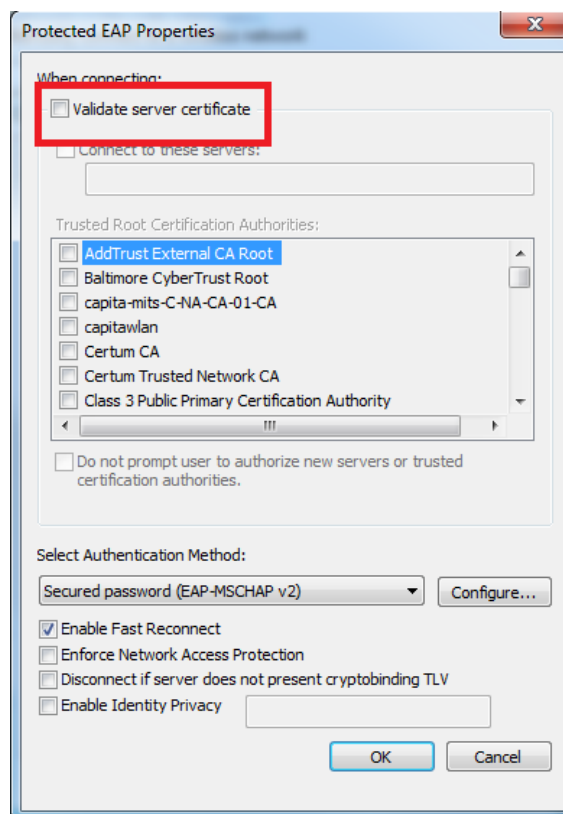


From the next window  
Select | Security Tab



Under the security tab

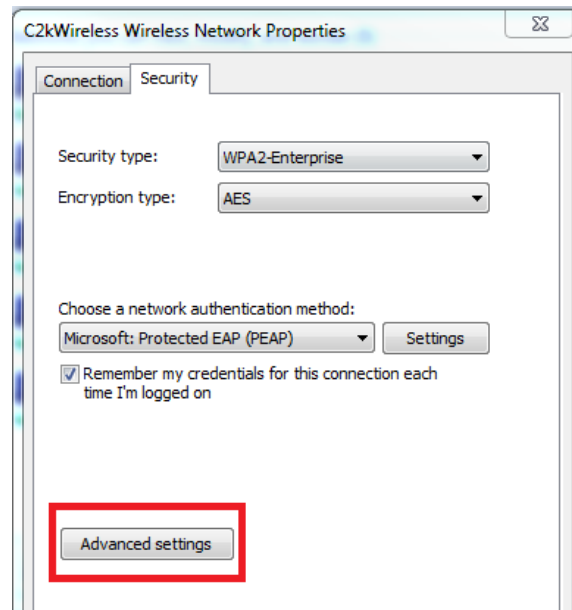
Click | Setting



From the settings page

Untick |Validate server certificate

Click **OK**  
On Security page.

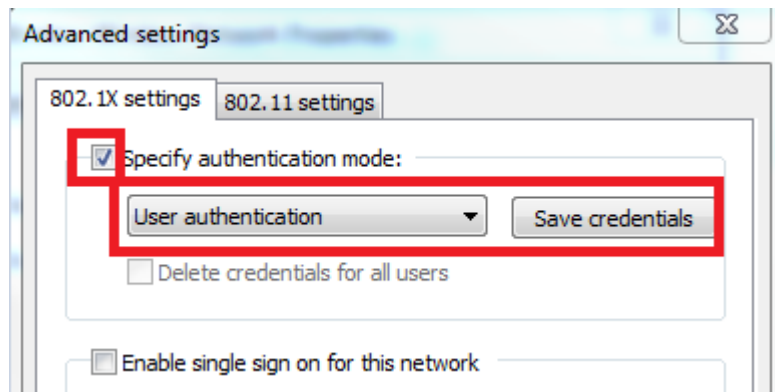


Click **Advanced settings**

Tick **Specify authentication mode**

Change to **User Authentication**

Click **Save credentials**



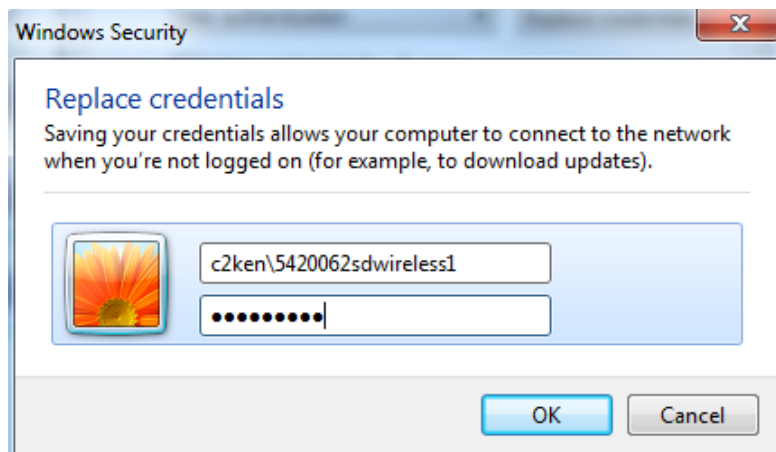
Enter username and password.

**Please note**

Username should start with **c2ken**

Click **OK**

After saving the details you should be able to connect to C2kWireless.



[Feedback](#)